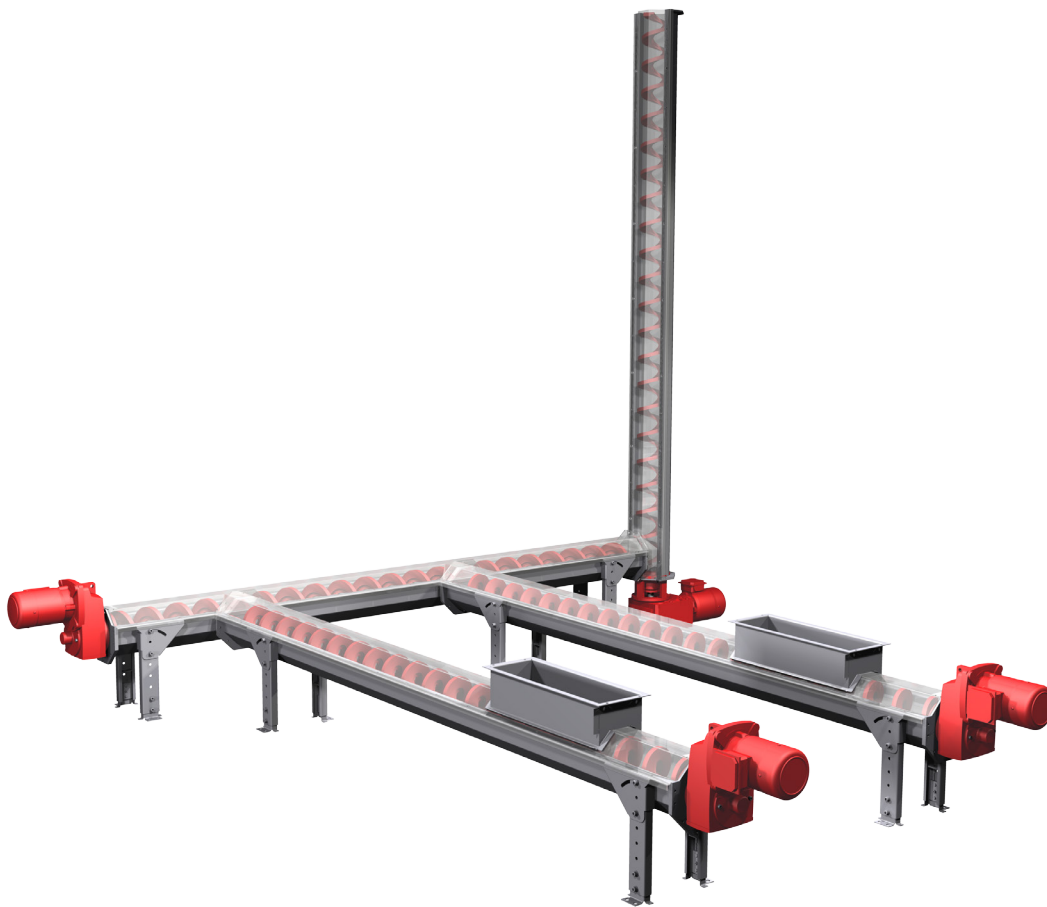


XC

Spiral Conveyor in Stainless Steel



Advantages and features

- Robust, shaftless conveyor
- High capacity, low maintenance
- Bolted legs and chutes - no welding required
- Low speed, low wear
- Handles wet, stringy, sticky materials
- Fully capsulated, sealed systems
- High finish guarantees a long life time
- Horizontal, vertical and angular conveying
- Very low inlet height

XC SPIRAL CONVEYOR

Meva Spiral Conveyor XC is designed for high efficiency, flexibility, easy installation, maximized reliability and simplified maintenance. A number of design innovations that result in one thing: cost efficiency.

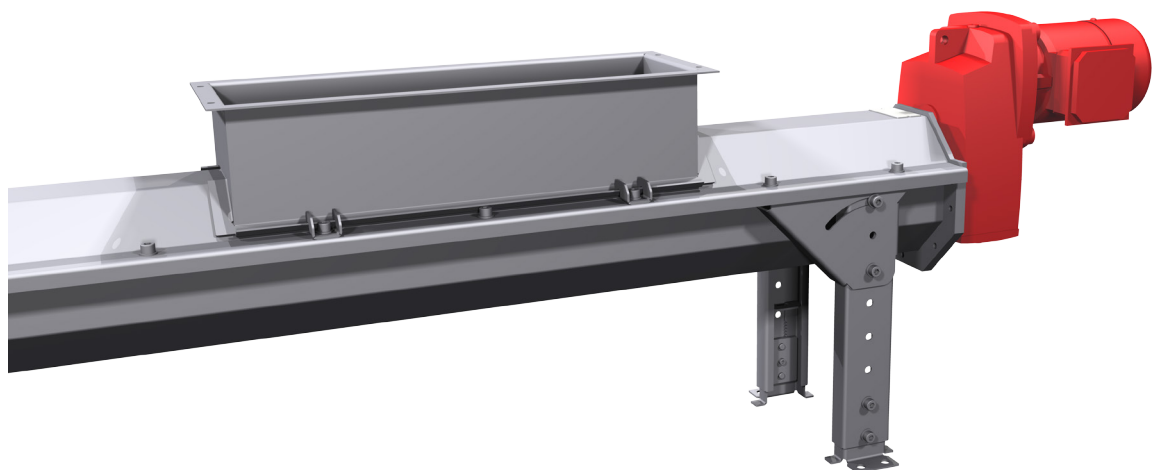
Meva XC is a conveyor system capable of transporting different materials such as dewatered sludge, pulp, garbage, wood chips, pellet fuel, slaughterhouse refuse etc.

Thanks to its high efficiency, the conveyor can operate at low speed, which means it runs smoother and is more energy efficient. The octagonal shape is more rigid than the traditional U-shape. In combination with the unique design of the lid, inclination up to 45° is possible with the standard trough, 90° with the vertical system. The lid also offers an extremely low inlet height, allowing low discharge heights from screens or similar.

Material is fed through one or more in-/outlets. Both in- and outlets can be mounted to face in any direction and our new design is assembled on site without welding. A hole is simply cut open and the chute is then bolted in place.

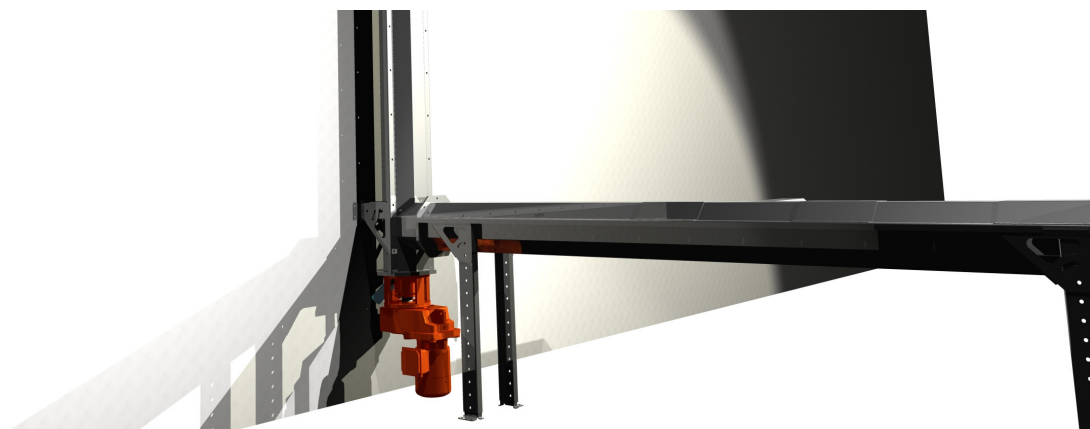
The shaftless spiral has only one bearing, at the drive end, giving more space for and less sensitivity to the conveyed material. Pushing drive enables the conveyor to work with materials that have a tendency to wrap around spirals. The trough is protected by replaceable plastic liners in HDPE. They can be replaced without any welding, thanks to the lid design. Wear bars in Hardox or dual color plastic for wear indication is optional.

XC Spiral Conveyor can be fitted with draining sections as an option, to separate liquids from solids. Complete systems with direct transfer from one conveyor to another can be provided. The tightly sealed lids and connections ensure good hygiene and a good working environment.

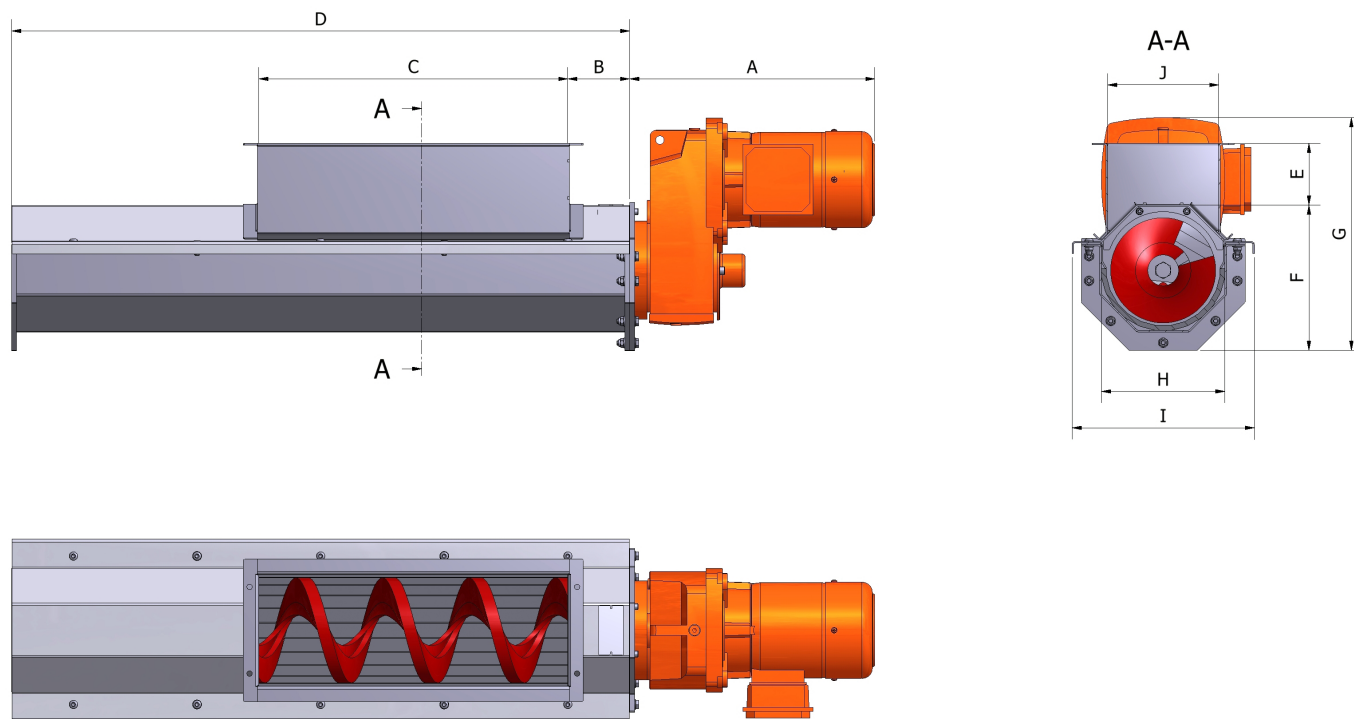


Applications

- Sewage treatment plants for removal of screenings from different types of screens and for handling dewatered sludge
- Household waste management as well as industrial
- Pulp and paper mills for knots, fiber sludge and pilper rejects
- Agriculture and raw foods industries
- Food processing industries
- Incineration plants for solid fuels eg. wood chips, straw, ash and slag



Technical Specification



| MODEL | GEARBOX * | A * | B | C | D | E * | F | G * | H | I | J * |
|----------------|-----------|-----|---------|--------|--------|-----|-----|-----|-----|-----|-----|
| X-CONVEYOR 200 | SK2282 | 400 | Min 100 | Varies | Varies | 100 | 235 | 375 | 200 | 295 | 180 |
| X-CONVEYOR 260 | SK3282 | 460 | Min 100 | Varies | Varies | 100 | 295 | 440 | 260 | 355 | 240 |
| X-CONVEYOR 320 | SK3282 | 460 | Min 100 | Varies | Varies | 100 | 355 | 470 | 320 | 415 | 300 |
| X-CONVEYOR 360 | SK3282 | 460 | Min 100 | Varies | Varies | 100 | 405 | 500 | 360 | 475 | 340 |
| X-CONVEYOR 420 | SK4282 | 530 | Min 100 | Varies | Varies | 100 | 465 | 600 | 420 | 535 | 400 |
| X-CONVEYOR 500 | SK4282 | 530 | Min 100 | Varies | Varies | 100 | 545 | 640 | 500 | 615 | 480 |

* Example basic hopper and gearbox

A & G varies